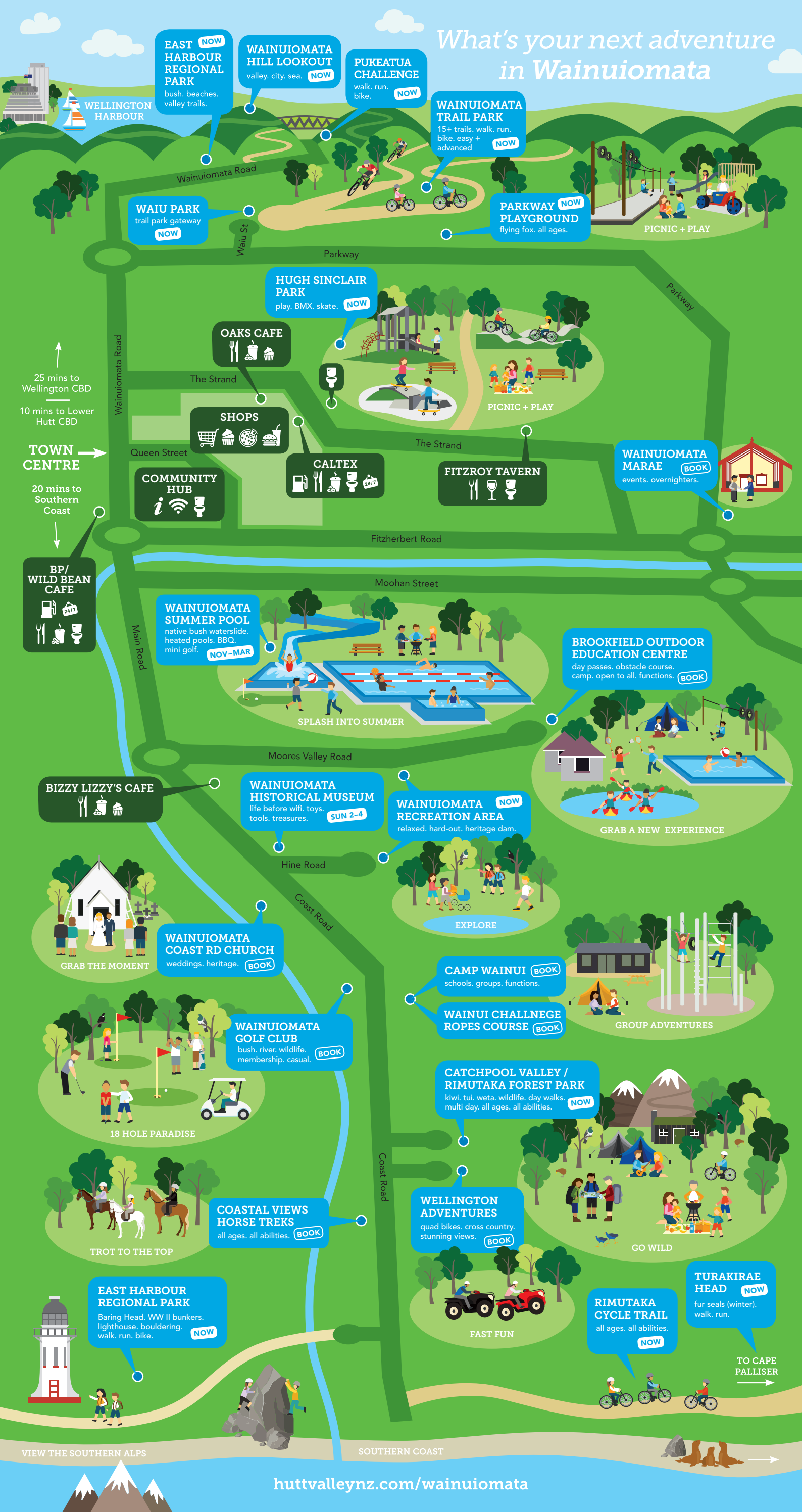


What's your next adventure in Wainuiomata



EAST HARBOUR REGIONAL PARK
bush, beaches, valley trails. **NOW**

WAINUIOMATA HILL LOOKOUT
valley, city, sea. **NOW**

PUKEATUA CHALLENGE
walk, run, bike. **NOW**

WAINUIOMATA TRAIL PARK
15+ trails, walk, run, bike, easy + advanced. **NOW**

WAIU PARK
trail park gateway. **NOW**

PARKWAY PLAYGROUND
flying fox, all ages. **NOW**

HUGH SINCLAIR PARK
play, BMX, skate. **NOW**

OAKS CAFE

SHOPS

CALTEX

FITZROY TAVERN

WAINUIOMATA MARAE
events, overnighters. **BOOK**

25 mins to Wellington CBD
10 mins to Lower Hutt CBD
TOWN CENTRE
20 mins to Southern Coast

BP / WILD BEAN CAFE

WAINUIOMATA SUMMER POOL
native bush waterslide, heated pools, BBO, mini golf. **NOV-MAR**

BROOKFIELD OUTDOOR EDUCATION CENTRE
day passes, obstacle course, camp, open to all, functions. **BOOK**

BIZZY LIZZY'S CAFE

WAINUIOMATA HISTORICAL MUSEUM
life before wifi, toys, tools, treasures. **SUN 2-4**

WAINUIOMATA RECREATION AREA
relaxed, hard-out, heritage dam. **NOW**

WAINUIOMATA COAST RD CHURCH
weddings, heritage. **BOOK**

CAMP WAINUI **BOOK**
schools, groups, functions.

WAINUI CHALLENGE ROPES COURSE **BOOK**

WAINUIOMATA GOLF CLUB
bush, river, wildlife, membership, casual. **BOOK**

CATCHPOOL VALLEY / RIMUTAKA FOREST PARK
kiwi, tui, weta, wildlife, day walks, multi day, all ages, all abilities. **NOW**

18 HOLE PARADISE

COASTAL VIEWS HORSE TREKS
all ages, all abilities. **BOOK**

WELLINGTON ADVENTURES
quad bikes, cross country, stunning views. **BOOK**

TURAKIRAE HEAD **NOW**
fur seals (winter), walk, run.

EAST HARBOUR REGIONAL PARK
Baring Head, WW II bunkers, lighthouse, bouldering, walk, run, bike. **NOW**

RIMUTAKA CYCLE TRAIL
all ages, all abilities. **NOW**

VIEW THE SOUTHERN ALPS

SOUTHERN COAST