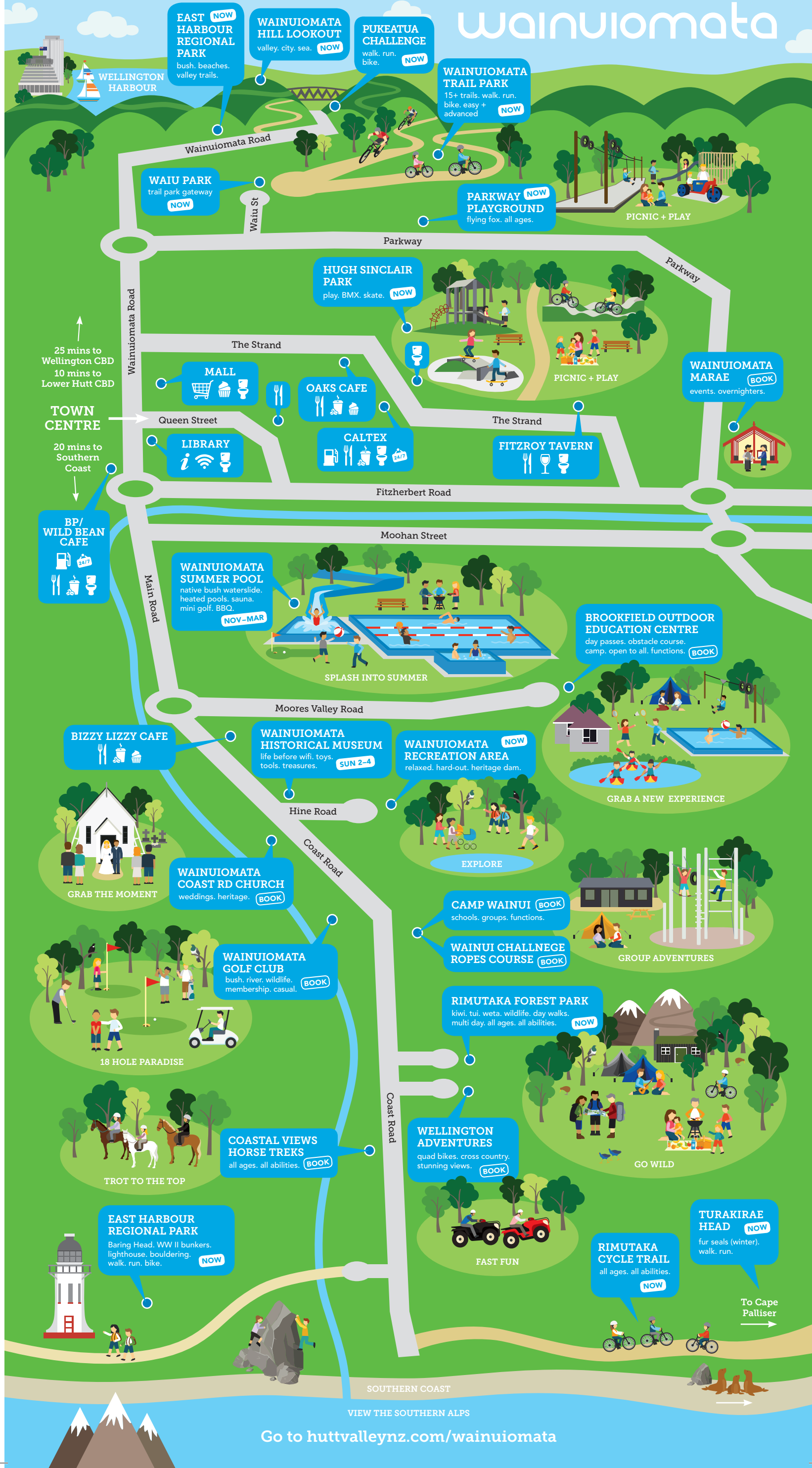


wainuiomata



EAST HARBOUR REGIONAL PARK **NOW**
bush, beaches, valley trails.

WAINUIOMATA HILL LOOKOUT **NOW**
valley, city, sea.

PUKEATUA CHALLENGE **NOW**
walk, run, bike.

WAINUIOMATA TRAIL PARK **NOW**
15+ trails, walk, run, bike, easy + advanced

WAIU PARK **NOW**
trail park gateway

PARKWAY PLAYGROUND **NOW**
flying fox, all ages.

PICNIC + PLAY

HUGH SINCLAIR PARK **NOW**
play, BMX, skate.

PICNIC + PLAY

WAINUIOMATA MARAE **BOOK**
events, overnights.

25 mins to Wellington CBD
10 mins to Lower Hutt CBD

TOWN CENTRE

20 mins to Southern Coast

MALL

OAKS CAFE

CALTEX

FITZROY TAVERN

LIBRARY

BP/WILD BEAN CAFE

WAINUIOMATA SUMMER POOL
native bush waterslide, heated pools, sauna, mini golf, BBQ. **NOV-MAR**

SPLASH INTO SUMMER

BROOKFIELD OUTDOOR EDUCATION CENTRE
day passes, obstacle course, camp, open to all, functions. **BOOK**

GRAB A NEW EXPERIENCE

BIZZY LIZZY CAFE

WAINUIOMATA HISTORICAL MUSEUM
life before wifi, toys, tools, treasures. **SUN 2-4**

WAINUIOMATA RECREATION AREA **NOW**
relaxed, hard-out, heritage dam.

EXPLORE

WAINUIOMATA COAST RD CHURCH
weddings, heritage. **BOOK**

GRAB THE MOMENT

CAMP WAINUI **BOOK**
schools, groups, functions.

WAINUI CHALLENGE ROPES COURSE **BOOK**

GROUP ADVENTURES

WAINUIOMATA GOLF CLUB
bush, river, wildlife, membership, casual. **BOOK**

18 HOLE PARADISE

RIMUTAKA FOREST PARK **NOW**
kiwi, tui, weta, wildlife, day walks, multi day, all ages, all abilities.

GO WILD

COASTAL VIEWS HORSE TREKS **BOOK**
all ages, all abilities.

TROT TO THE TOP

WELLINGTON ADVENTURES **BOOK**
quad bikes, cross country, stunning views.

FAST FUN

EAST HARBOUR REGIONAL PARK **NOW**
Baring Head, WW II bunkers, lighthouse, bouldering, walk, run, bike.

RIMUTAKA CYCLE TRAIL **NOW**
all ages, all abilities.

TURAKIRAE HEAD **NOW**
fur seals (winter), walk, run.

To Cape Palliser

VIEW THE SOUTHERN ALPS

Go to huttvalleynz.com/wainuiomata